



The Great Grid Upgrade

Sea Link

Sea Link

Volume 6: Environmental Information

Document: 6.3.2.7.E

Part 2 Suffolk

Chapter 7

Appendix 2.7.E Construction Worker Trip Distribution

Planning Inspectorate Reference: EN020026

Version: A

March 2025

Infrastructure Planning (Applications: Prescribed Forms and
Procedure) Regulations 2009 Regulation 5(2)(a)

nationalgrid

Page intentionally blank

Forecast Construction Worker Trip Distribution

Distribution to/ from B1121 Main Road access (S-BM09) for purposes of identifying A12 north/ south split
Approximate 60-minute catchment area of the Site

TS060 - Industry

ONS Crown Copyright Reserved [from Nomis on 11 October 2024]

population All usual residents aged 16 years and over in employment the week before the census
units Persons
date 2021
industry F: Construction

Distribution

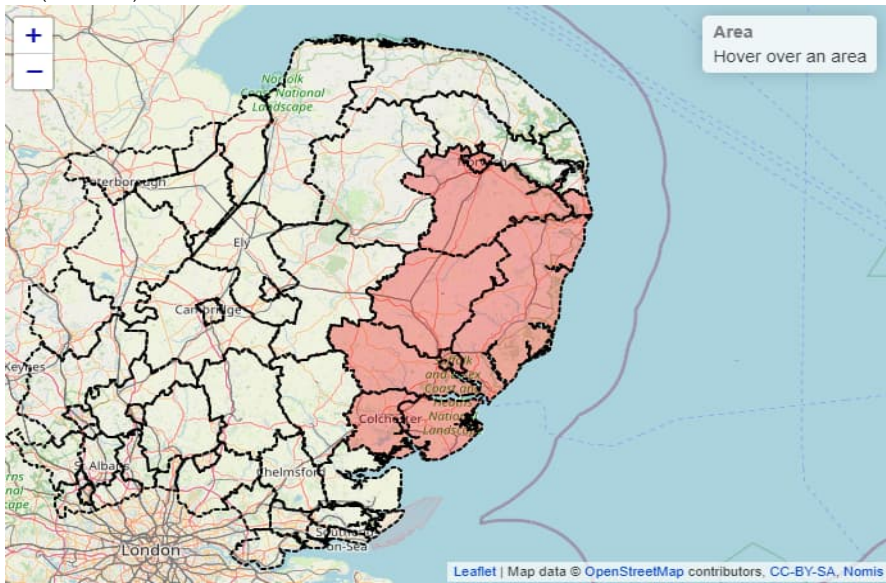
Region	local authority: district / unitary (as of April 2023)	2021 super output area - middle layer	Total: All usual residents aged 16 years and over in employment the week before the census	F: Construction	Journey Time (mins)	Factored	A12 North	A12 South		
East	East Suffolk	East Suffolk 001	2,786	287	55	5	100%			
		East Suffolk 002	3,128	282	45	6	100%			
		East Suffolk 003	3,320	363	45	8	100%			
		East Suffolk 004	4,037	302	45	7	100%			
		East Suffolk 005	2,995	339	40	8	100%			
		East Suffolk 006	3,028	260	45	6	100%			
		East Suffolk 007	3,065	321	40	8	100%			
		East Suffolk 008	3,830	382	40	10	100%			
		East Suffolk 009	2,409	243	35	7	100%			
		East Suffolk 010	3,328	305	35	9	100%			
		East Suffolk 011	3,893	367	30	12	100%			
		East Suffolk 012	4,061	424	25	17	100%			
		East Suffolk 013	3,222	341	30	11	100%			
		East Suffolk 014	2,266	250	25	10	100%			
		East Suffolk 015	2,831	308	20	15	100%			
		East Suffolk 016	2,616	265	15	18	100%			
		East Suffolk 017	4,504	384	15	26	50%	50%		
		East Suffolk 018	4,070	423	Excluded, not via A12					
		East Suffolk 019	3,371	369	Excluded, not via A12					
		East Suffolk 020	3,356	290	15	19		100%		
		East Suffolk 021	3,110	290	25	12		100%		
		East Suffolk 022	3,243	278	20	14		100%		
		East Suffolk 023	5,169	410	20	21		100%		
		East Suffolk 024	4,360	435	30	15		100%		
		East Suffolk 025	6,349	475	25	19		100%		
		East Suffolk 026	3,883	311	30	10		100%		
		East Suffolk 027	4,456	299	35	9		100%		
		East Suffolk 028	3,239	198	40	5		100%		
		East Suffolk 029	3,665	189	40	5		100%		
		East Suffolk 030	2,759	159	40	4		100%		
	Mid Suffolk	Mid Suffolk 001	3,532	356	40	9	100%			
		Mid Suffolk 002	4,214	509	50	10	100%			
		Mid Suffolk 003	3,446	377	30	13	100%			
		Mid Suffolk 004	4,492	458	55	8	50%	50%		
		Mid Suffolk 005	3,491	394	50	8	50%	50%		
		Mid Suffolk 006	4,331	514	55	9		100%		
		Mid Suffolk 007	4,093	496	35	14	50%	50%		
		Mid Suffolk 008	2,594	315	45	7		100%		
		Mid Suffolk 009	3,847	419	50	8		100%		
		Mid Suffolk 010	7,082	732	45	16		100%		
		Mid Suffolk 011	5,255	522	40	13		100%		
		Mid Suffolk 012	3,671	459	35	13		100%		
	South Norfolk	ALL	67,740	6,247	50	125	100%			
	Norwich	ALL	65,723	4,460	60	74	100%			
	Great Yarmouth	Great Yarmouth 006	3,442	215	60	4	100%			
		Great Yarmouth 007	2,986	241	60	4	100%			
		Great Yarmouth 008	2,900	290	60	5	100%			
		Great Yarmouth 009	3,155	269	60	4	100%			
		Great Yarmouth 010	3,707	278	60	5	100%			
		Great Yarmouth 011	2,905	232	60	4	100%			
Great Yarmouth 012		2,428	256	60	4	100%				
Great Yarmouth 013		3,440	346	60	6	100%				
Ipswich	ALL	67,029	5,865	40	147		100%			
Babergh	ALL	42,953	4,831	50	97		100%			
Colchester	ALL	92,021	9,239	55	168		100%			
Tendring	ALL	58,280	7,023	60	117		100%			
West Suffolk	West Suffolk 009	3,397	276	60	5		100%			
	West Suffolk 011	4,410	256	60	4		100%			
	West Suffolk 012	4,242	315	60	5		100%			
	West Suffolk 013	3,734	231	60	4		100%			
	West Suffolk 014	3,956	300	60	5		100%			
	West Suffolk 016	3,798	406	60	7		100%			
Total						1,236	452	785		
In order to protect against disclosure of personal information, records have been swapped between different geographic areas							37%	63%		

In order to protect against disclosure of personal information, records have been swapped between different geographic areas
and counts perturbed by small amounts. Small counts at the lowest geographies will be most affected.

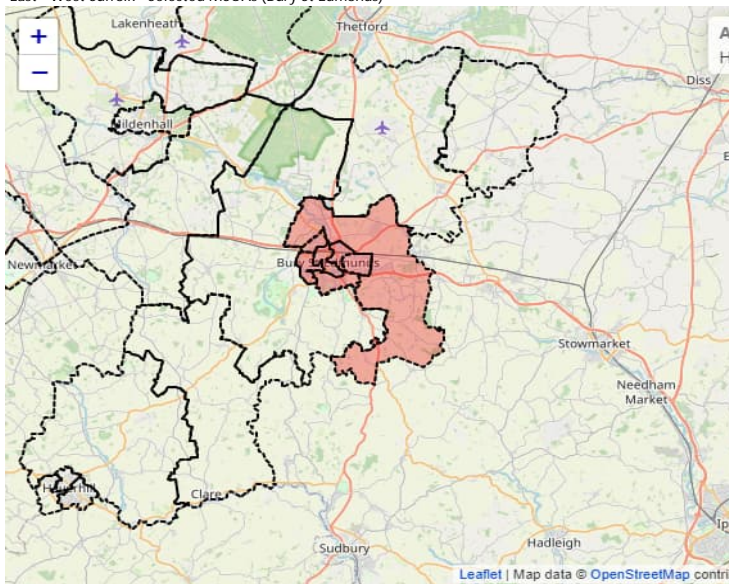
A12	%	
North	37%	Northern parts of East Suffolk and Mid Suffolk, all of South Norfolk and Norwich, southern parts of Great Yarmouth
South	63%	Southern parts of East Suffolk and Mid Suffolk, all of Ipswich, Babergh, Colchester and Tendring, eastern parts of West Suffolk (Bury St Edmunds)
Total	100%	

Selected Points of Origin (60-Minute Catchment Area)

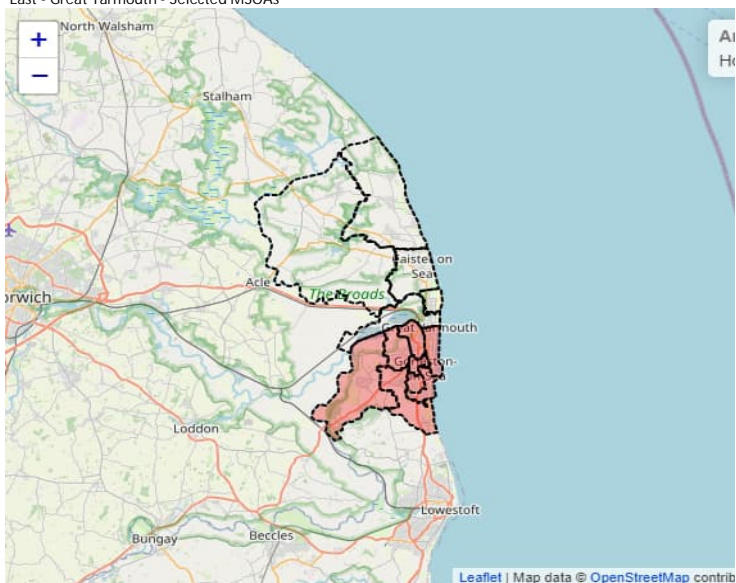
East (District Level)



East - West Suffolk - Selected MSOAs (Bury St Edmunds)



East - Great Yarmouth - Selected MSOAs



Page intentionally blank

National Grid plc
National Grid House,
Warwick Technology Park,
Gallows Hill, Warwick.
CV34 6DA United Kingdom

Registered in England and Wales
No. 4031152
nationalgrid.com